

Venue

Auditorium and Library
Department of Obstetrics and
Gynecology
Medical Center – University of
Freiburg
Hugstetter Str. 55
79106 Freiburg



Directions

Enter through the side entrance next to the Department of Obstetrics and Gynecology. The library is on the left on the ground floor, and the auditorium is on the second floor.

Symposium Program Committee

Dr. Rebecca Diehl, Dr. Philipp Mathé, PD Dr. Roman Sankowski, Dr. Karina Zeyer

Administrative Organisation

Coordination Office Berta-Ottenstein-Program
Faculty of Medicine – Office of the Dean for Research

Coordination Office IMMediate Advanced Clinician Scientist-Program
Center for Medicine - Department of Medicine II
Medical Center – University of Freiburg

Please fill in the registration form:

[Registration](#)



You can find our website here:

ufr.link/BOP-IMMediate-Symposium-2025



Contact

Faculty of Medicine – Office of the Dean
for Research
Coordination Office Berta-Ottenstein-
Program
Dr. Irene Nagel
clinicianscientist@uniklinik-freiburg.de
Breisacher Str. 153
79110 Freiburg
ufr.link/BOP

Medical Center – University of Freiburg
Center for Medicine - Department of
Medicine II
Coordination Office IMMediate Advanced
Clinician Scientist-Program
Dr. Susanne Kamphausen
immediate@uniklinik-freiburg.de
Breisacher Str. 153
79110 Freiburg
ufr.link/IMMediate

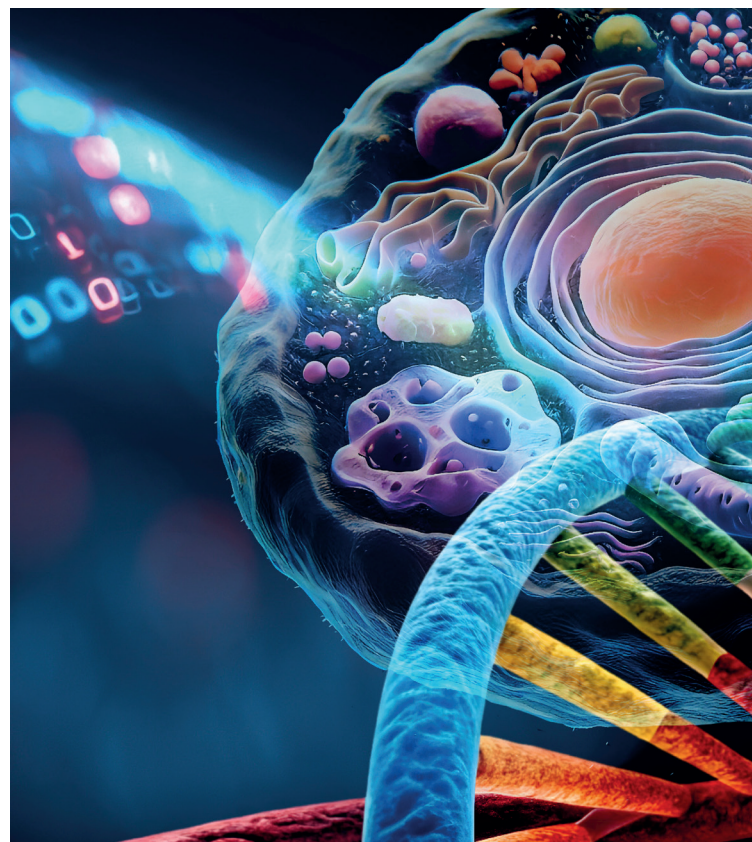
Faculty of Medicine
BERTA-OTTENSTEIN-PROGRAM
FOR [ADVANCED] CLINICIAN SCIENTISTS

With funding from the:
 Federal Ministry of
Research, Technology
and Space

IMMediate
Immune-Mediated Diseases

Extending Frontiers in Science and Medicine

Joint Symposium of the Berta-Ottenstein-
and IMMediate-Program



universität freiburg

UNIVERSITÄTS
KLINIKUM FREIBURG

Joint Symposium „Extending Frontiers in Science and Medicine“

Wednesday, 26 November 2025

09:00 a.m. – 05:15 p.m.

Auditorium and Library of the Department of Obstetrics and
Gynecology

Hugstetter Str. 55, 79106 Freiburg

09:00 Registration

09:30 **Welcome, Opening Remarks and Introduction to the
Berta-Ottenstein- and IMMEDIATE-Program**

Robert Thimme – *Center for Medicine, Department of
Medicine II, Medical Center – University of Freiburg*
Ute Spiekerkötter – *Department of General Pediatrics,
Adolescent Medicine and Neonatology, Medical Center –
University of Freiburg*

09:45 **Session I:
Expanding Immunology and Oncology**

Chairs: Karina Zeyer and Kristina Maas-Bauer

09:45 **Breaking Barriers in Haematoncolog and Daily Life**

Mariko Bennett – *Division of Neurology, Children's Hospital
of Philadelphia*

10:30 **Deep profiling of the tumor immune microenvironment in
patients with biliary tract cancer**

Maryam Barsch – *Department of Medicine II, Medical
Center – University of Freiburg*

10:45 **Spatial and Multi-Omic Profiling Reveals Pericyte-Derived
CCL19 as a Key Prognostic Factor in CNS Lymphoma**

Julia Kühn – *Department of Medicine I, Medical Center –
University of Freiburg*

11:00 **Mouse Fate Mapping Models in the Immunologist's
Toolbox: Advancing Macrophage Research**

Anne Löblein – *Institute for Infection Prevention and Control,
Medical Center – University of Freiburg*

11:15 **Coffee Break**

11:45 **Session II:
Removing Barriers in Clinical Research**

Chairs: Ann-Kathrin Rauch and Philipp Mathé

11:45 **Using Platform Trials to Optimize Patient Recruitment for
Clinical Studies**

Achim Kaasch – *Institute of Medical Microbiology and
Hospital Hygiene, University Hospital Magdeburg*

12:30 **Using Real-World Data for Clinical Research in Emergency
Medicine**

Leo Benning – *University Emergency Center, Medical Center
– University of Freiburg*

12:45 **Integrating Clinical Research into Rheumatology Care:
Establishing a Dedicated Research Outpatient Clinic**

Stephanie Finzel – *Department of Rheumatology and Clinical
Immunology, Medical Center – University of Freiburg*

01:00 **From Basic Science to Clinical Translation: Challenges and
Successes**

Nils Schallner – *Department of Anesthesiology and Critical
Care, Medical Center – University of Freiburg*

01:15 **POSTER SESSION** of the Fellows of the Berta-
Ottenstein- and IMMEDIATE-Program with lunch
break

**Seize your chance to get to know the fellows
and their research!**

02:15 **Session III:
How to extend Financial and Ethical Boundaries**

Chairs: Nina Chevalier and Rebecca Diehl

02:15 **Extending Frontiers in Research Funding, DFG as an
Example**

Britta Siegmund – *Medical Department, Division of
Gastroenterology, Infectiology and Rheumatology, Charité
Berlin*

02:45 **Ethical Frontiers and Boundaries in Science**

Joachim Boldt – *Institute for Ethics and History of Medicine,
University of Freiburg*

03:15 **Coffee Break**

03:45 **Session IV:
The New Frontier: Artificial Intelligence and Big Data at
the Edge of Medicine**

Chairs: Roman Sankowski and Lauritz Miarka

03:45 **Impact of machine learning on diagnostics in (Neuro)
Pathology**

Andreas von Deimling – *Department of Neuropathology,
University Hospital Heidelberg*

04:30 **Limits of Current AI Models and Impact on
Medical Applications**

Xavier Coubez – *Institut de Cancérologie Strasbourg Europe*

04:45 **Streamlining Clinical Research: Orchestrating Automated
Analytical Pipelines on Server and Cloud Platforms**

Janis Nolde – *Department of Medicine IV: Nephrology and
Primary, Care Medical Center – University of Freiburg*

05:00 **Artificial Intelligence-Assisted Tumor Detection of Soft
Tissue Sarcomas using Genome-wide Mutation
Signatures in Cell-free DNA**

Adrian Schmid – *Department of Plastic Surgery, Medical
Center – University of Freiburg*

05:15 **Closing**

Rebecca Diehl, *Department of Dermatology, Medical Center
– University of Freiburg*

Philipp Mathé, *Department of Medicine II, Medical Center –
University of Freiburg*

Roman Sankowski, *Institute of Neuropathology, Medical
Center – University of Freiburg*

Karina Zeyer, *Department of General Pediatrics, Adolescent
Medicine and Neonatology, Medical Center – University of
Freiburg*